

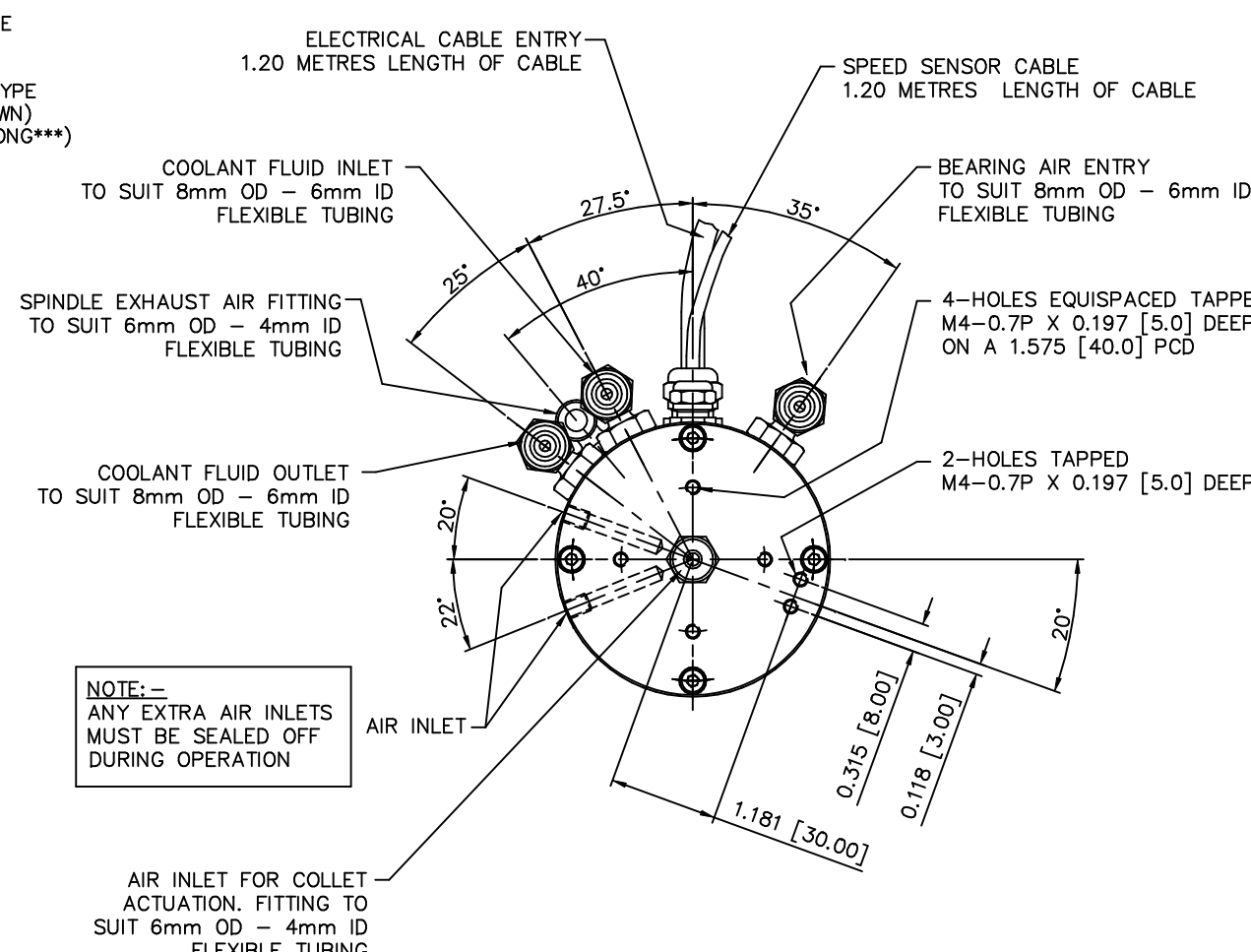
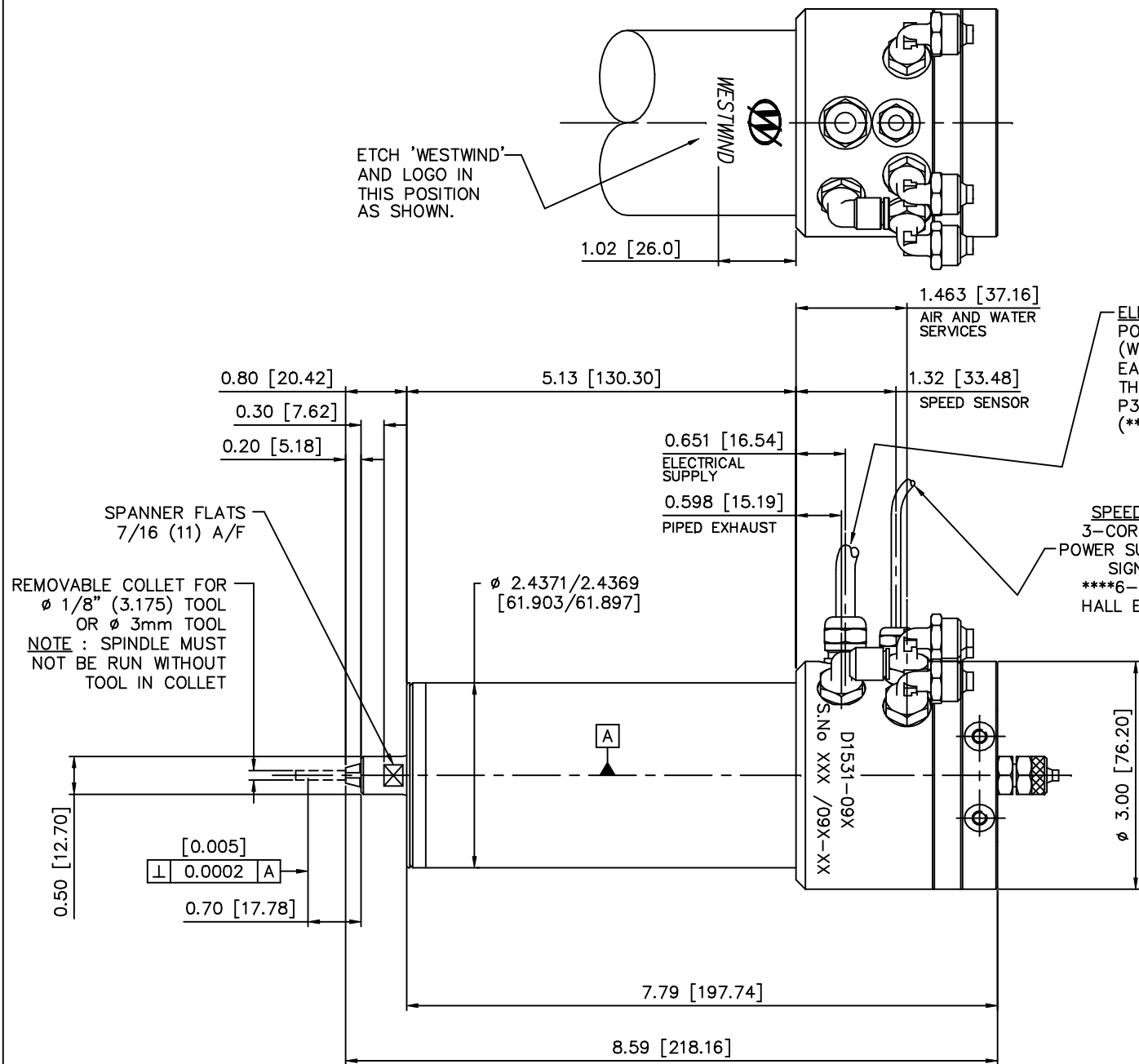
DRAWING No.  
238651-U

THE DRAWING AND DESIGN ARE THE PROPERTY OF WESTWIND AIR BEARINGS LTD. THEY REMAIN AT ALL TIMES THEIR PROPERTY AND MUST NOT BE USED TO THE DETRIMENT OF THEIR INTERESTS.

DO NOT SCALE DRAWING

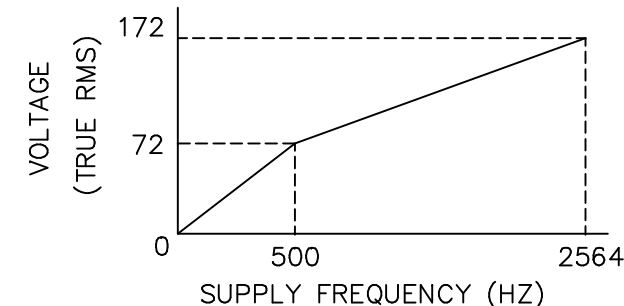
PROJECTION IF IN DOUBT ASK

| PREVIOUS MODIFICATIONS |          |          | PREVIOUS MODIFICATIONS |          |          | PREVIOUS MODIFICATIONS |          |          | PREVIOUS MODIFICATIONS |          |          | PREVIOUS MODIFICATIONS |          |         | MOD No. | DATE     | MODIFICATION                                      | ISSUE |
|------------------------|----------|----------|------------------------|----------|----------|------------------------|----------|----------|------------------------|----------|----------|------------------------|----------|---------|---------|----------|---|-------|
| ISS.                   | MOD. No. | DATE     | ISS.                   | MOD. No. | DATE     | ISS.                   | MOD. No. | DATE     | ISS.                   | MOD. No. | DATE     | ISS.                   | MOD. No. | DATE    | 49085   | 20.12.04 |   | U     |
| T                      | 48923    | 20.12.04 | P                      | 47286    | 17.7.03  | K                      | 42810    | 13.02.00 | F                      | 35476    | 21.04.99 | B                      | 32926    | 11.8.98 |         |          | ETCHED 'WESTWIND' LOGO RE-SIZED AND REPOSITIONED. |       |
|                        |          |          | Q                      | 47763    | 17.7.03  | L                      | 44168    | 24.08.00 | G                      | 36885    | 02.08.99 | C                      | 32956    | 20.8.98 |         |          | ETCH 'WESTWIND' ADDED.                            |       |
|                        |          |          | R                      | 48548    | 27.10.04 | M                      | 46563    | 9.10.02  | H                      | 39532    | 07.04.00 | D                      | 34982    | 1.3.99  |         |          |   |       |
|                        |          |          | S                      | 47866    | 20.12.04 | N                      | 46316    | 16.12.02 | J                      | 38794    | 12.06.00 | E                      | 56113    | 12.3.99 |         |          |   |       |



| BASIC SPECIFICATION                                      | IMPERIAL UNITS                  | METRIC UNITS                 |
|--|---------------------------------|------------------------------|
| BEARING AIR SUPPLY PRESSURE                              | 80 P.S.I.G.                     | 5.4 BAR                      |
| AIR CONSUMPTION AT 80 P.S.I.G. (STATIC)                  | 3.6 S.C.F.M.                    | 102 Litres/min               |
| COOLING WATER FLOW                                       | 19.8 IMP. GALL/HOUR             | 1.5 Litres/min               |
| COOLING WATER INLET TEMPERATURE                          | 17 ± 1°C                        |                              |
| MAX. HEAT DISSIPATION TO COOLING WATER                   | 2380 BTU/HOUR                   | 556 WATTS                    |
| RADIAL FAILURE LOAD AT W (AT 110,000 RPM)                | 21 lb.f                         | 9.5 Kgf                      |
| AXIAL FAILURE LOAD (PUSH)                                | 55 lb.f                         | 25 Kgf                       |
| MAXIMUM SPEED  | 150000 R.P.M.                   |                              |
| RADIAL STIFFNESS FROM AIR FILM IN PLANE W AT 110,000 RPM | 65000 lb/in                     | 1.17 Kg/micron               |
| AXIAL STIFFNESS FROM AIR FILM                            | 5900 lb/in                      | 0.10 Kg/micron               |
| COLLET ACTUATION PRESSURE                                | 78 - 82 P.S.I.G.                | 5.5 - 5.8 Kg/cm <sup>2</sup> |
| WEIGHT   | 7.15 lb                         | 3.24 Kg                      |
| CONTINUOUS POWER AT 8% SLIP                              | 139 Watts @ 500 Hz              |                              |
| MAXIMUM AXIAL ACCELERATION                               | 50g ( DERIVED THEORETICAL MAX ) |                              |

| COLLET SIZE   | W.W. PART No. |
|---------------|---------------|
| $\phi$ 0.125" | 17593         |
| $\phi$ 3.00mm | 17594         |



ADDITIONAL DETAILED INFORMATION IS AVAILABLE ON REQUEST

| GEOMETRIC TOLERANCE SYMBOLS |     | LIMITS         |     | SIGNED               | DATE | TITLE   | PRODUCT  | DRAWING No. |
|-----------------------------|-----|----------------|-----|----------------------|------|---------|----------|-------------|
| CHARACTERISTIC              | SYM | CHARACTERISTIC | SYM |                      |      |         |          |             |
| STRAIGHTNESS                | -   | CYLINDRICITY   |     | DRAWN                | SEF  | 29.6.98 | D1531-09 | 238651-U    |
| ROUNDNESS                   |     | SQUARENESS     |     | CHECKED              | SEF  | 29.6.98 |          |             |
| PARALLELISM                 |     | CONCENTRICITY  |     | DEVELOPMENT APPROVAL | JDS  | 29.6.98 |          |             |
| ANGULARITY                  |     | SYMMETRY       |     | APPLICATIONS MANAGER | CPG  | 30.6.98 |          |             |
| RUN OUT                     |     | FLATNESS       |     |                      |      |         |          |             |

NOMINAL UNLESS OTHERWISE STATED  
DIMENSIONS IN INCHES METRIC EQUIVALENT IN [ ]

PROVISIONAL  
OUTLINE

WESTWIND AIR BEARINGS LTD  
HOLTON ROAD, HOLTON HEATH  
POOLE, DORSET BH18 8LN ENGLAND