

DRAWING No.
127282-G

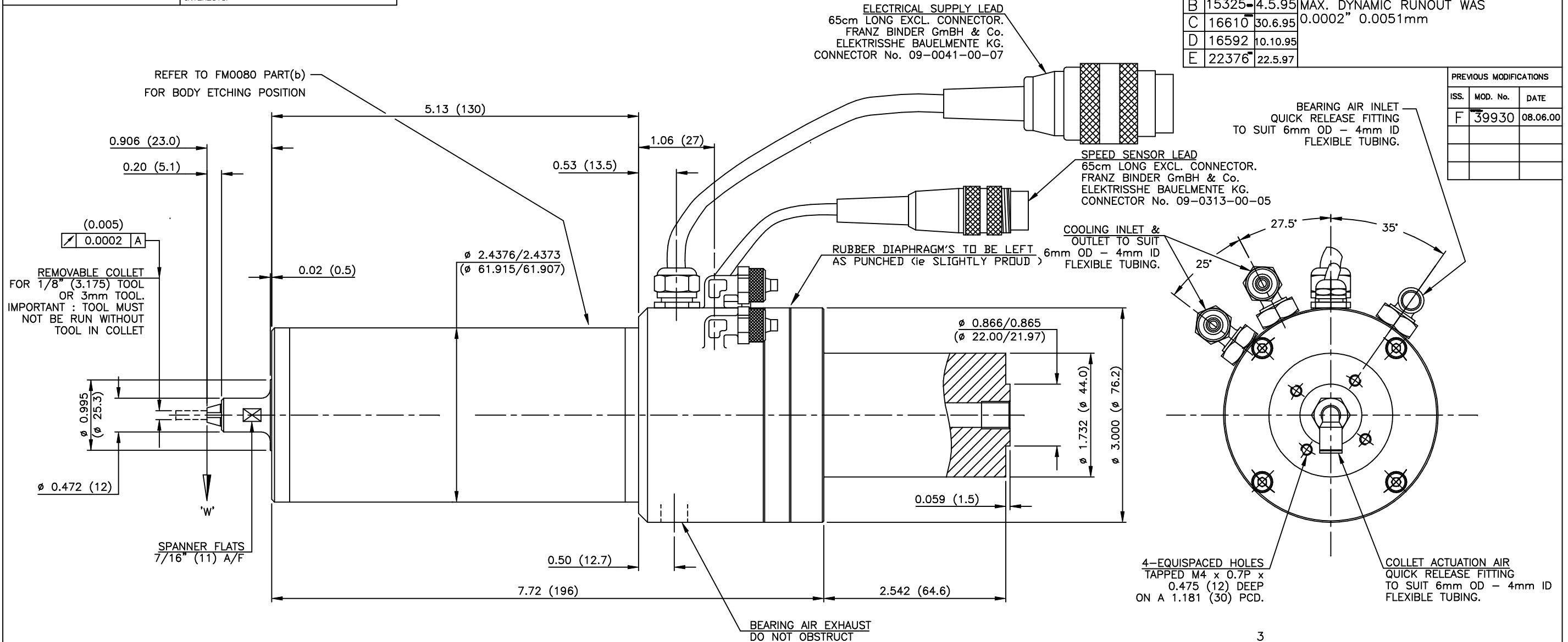
THE DRAWING AND DESIGN ARE THE PROPERTY OF Westwind Air Bearings Ltd. THEY REMAIN AT ALL TIMES THEIR PROPERTY AND MUST NOT BE USED TO THE DETRIMENT OF THEIR INTERESTS.

PROJECTION

IF IN DOUBT ASK

PREVIOUS MODIFICATIONS			MOD No.	DATE	MODIFICATION	ISSUE
ISS.	MOD. No.	DATE	45995	17.10.02		G
B	15325	4.5.95	MAX. DYNAMIC RUNOUT WAS 0.0002" 0.0051mm			
C	16610	30.6.95				
D	16592	10.10.95				
E	22376	22.5.97				

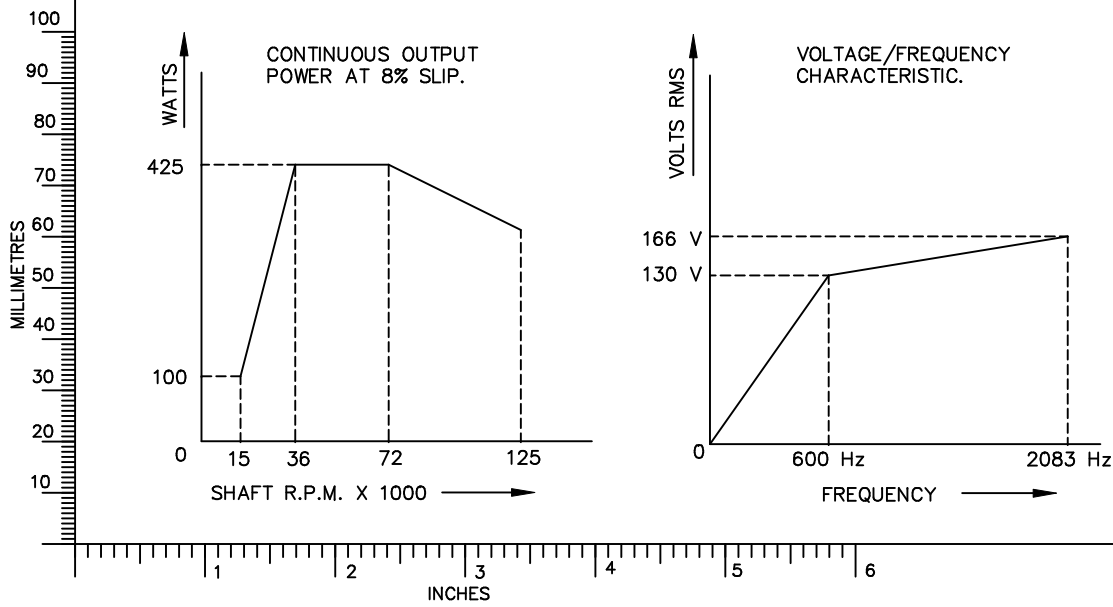
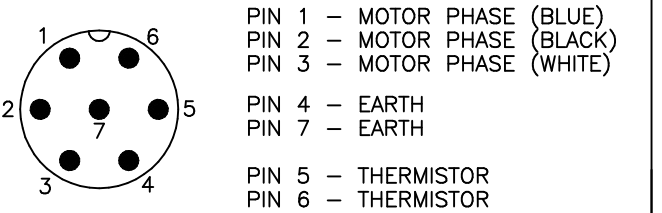
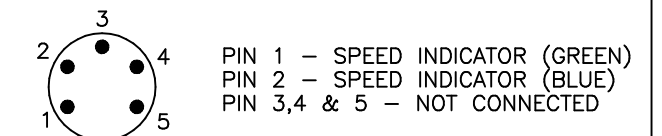
PREVIOUS MODIFICATIONS		
ISS.	MOD. No.	DATE
F	39930	08.06.00



COLLET	FM ITEM No.
1/8"	17593
3mm	17594

BASIC SPECIFICATION	IMPERIAL UNITS	METRIC UNITS
BEARING AIR SUPPLY PRESSURE	80 P.S.I.G.	5.6 Kg/cm ²
AIR CONSUMPTION AT 61 P.S.I.G.	2 S.C.F.M.	56 Litres/min
COOLING WATER FLOW	13.2 IMP. GALL/HOUR	1.0 Litres/min
COOLING WATER INLET TEMPERATURE	16-20 °C	
MAX. HEAT DISSIPATION TO COOLING WATER	2115 BTU/HOUR	620 WATTS
RADIAL FAILURE LOAD AT W (AT 125000 RPM)	26 lb/f	11.8 Kgf
AXIAL FAILURE LOAD (PUSH)	55 lb/f	25 Kgf
MAXIMUM SPEED	125,000 R.P.M.	
COLLET ACTUATION PRESSURE	80 P.S.I.G.	5.6 Kg/cm ²
APPROX WEIGHT	7.3 lbs	3.3 Kgs
MAX DYNAMIC RUNOUT ACROSS FULL SPEED RANGE	0.0003"	0.0076mm

MAXIMUM OUTPUT POWER 750 WATTS AT 1333 Hz
ADDITIONAL DETAILED INFORMATION IS AVAILABLE ON REQUEST



GEOMETRIC TOLERANCE SYMBOLS				DRAWN	GTE
CHARACTERISTIC	SYM	CHARACTERISTIC	SYM	CHECKED	GTE
STRAIGHTNESS	—	CYLINDRICITY	⊘	APPROVED	PMF
ROUNDNESS	○	SQUARENESS	⊥	DATE	27.2.95
PARALLELISM	//	CONCENTRICITY	⊙	SCALE	1:1
ANGULARITY	∠	SYMMETRY	≡		
RUN OUT	↗	FLATNESS	∥		

TITLE
PROVISIONAL OUTLINE
DIMENSIONS IN INCHES
MM IN BRACKETS

LIMITS
NOMINAL UNLESS STATED OTHERWISE

PRODUCT: **D1331-21**
DRAWING No.: **127282-G**

WESTWIND AIR BEARINGS LTD
HOLTON ROAD, HOLTON HEATH
POOLE, DORSET BH16 6LN ENGLAND