

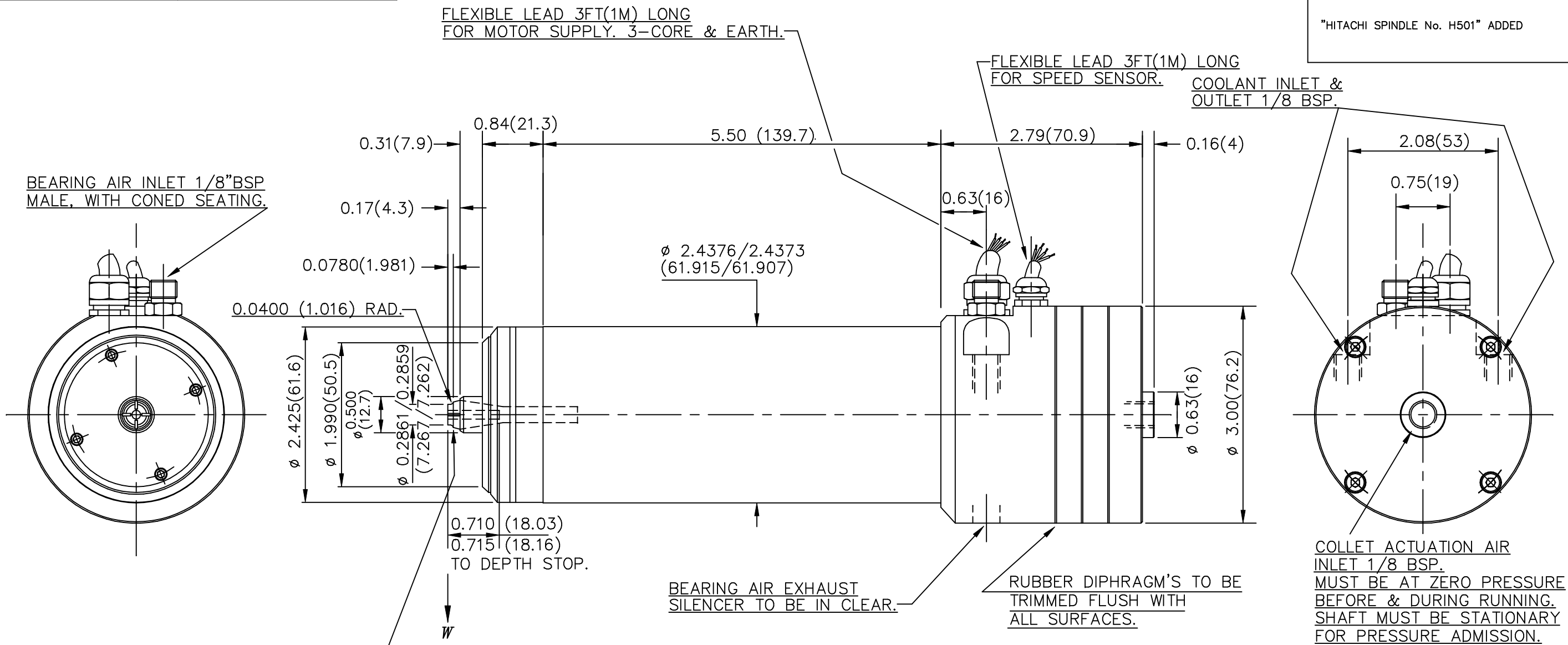
DRAWING No.
215309-H

THE DRAWING AND DESIGN ARE THE PROPERTY OF
FEDERAL MOGUL WESTWIND AIR BEARINGS LTD.
THEY REMAIN AT ALL TIMES THEIR PROPERTY AND
MUST NOT BE USED TO THE DETRIMENT OF THEIR
INTERESTS.

PROJECTION 

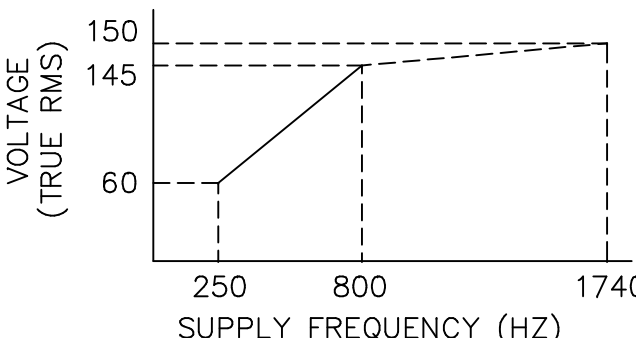
IF IN DOUBT ASK

MOD No.	DATE	MODIFICATION	ISSUE
2396	7.9.90		H
"HITACHI SPINDLE No. H501" ADDED			

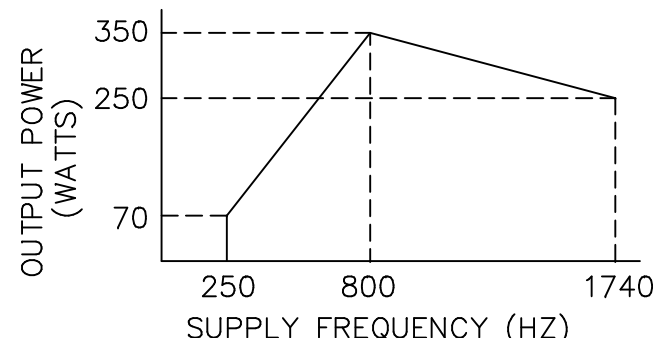


FREEZE DESIGN.
ISSUE MUST NOT BE RAISED
WITHOUT CUSTOMER APPROVAL.

16° TAPER COLLET
SUITS ϕ 0.125(3.175)
TOOL SHANK. MUST ALWAYS
HAVE TOOL IN PLACE
FOR RUNNING.



RECOMMENDED CONVERTER
CHARACTERISTIC

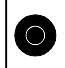


MOTOR POWER CHARACTERISTIC
AT 8% SLIP

BASIC SPECIFICATION	IMPERIAL UNITS	METRIC UNITS
BEARING AIR SUPPLY PRESSURE	80 P.S.I.G.	5.6 Kg/cm ²
AIR CONSUMPTION	2.7 S.C.F.M.	75 Litres/min
COOLING WATER FLOW	10.6 IMP. GALL/HOUR	0.8 Litres/min
COOLING WATER INLET TEMPERATURE	16-20 °C	
RADIAL FAILURE LOAD AT W(AT 15000 RPM)	15 lbf	6.8 Kgf
RADIAL FAILURE LOAD AT W(AT 90000 RPM REF.ONLY)	37 lbf	16.8 Kgf
AXIAL FAILURE LOAD (PUSH)	36 lbf	16.3 Kgf
MAXIMUM SPEED	100000 R.P.M.	
COLLET ACTUATION PRESSURE	80 P.S.I.G.	5.6 Kg/cm ²

ADDITIONAL DETAILED INFORMATION IS AVAILABLE ON REQUEST

GEOMETRIC TOLERANCE SYMBOLS		DRAWN R.BIRD
CHARACTERISTIC	SYM	CHECKED
STRAIGHTNESS	—	APPROVED M.C.T
ROUNDNESS	○	DATE 12.2.88
PARALLELISM	//	SCALE
ANGULARITY	∠	1:1
RUN OUT	↗	

TITLE	PRODUCT	DRAWING No.
PROVISIONAL OUTLINE	HITACHI SPINDLE No. H501.	D1264-4 215309-H
ALL DIMENSIONS ARE NOMINAL UNLESS OTHERWISE STATED.		
 FEDERAL MOGUL WESTWIND AIR BEARINGS LTD INDUSTRIAL ESTATE, HOLTON HEATH, POOLE, DORSET, ENGLAND, BH16 6LN		